

SPASM MUSEUM

Newsletter October 2024

Spasm HealthCare Museum, Building 6 Victoria Rd Gladesville
Situating at the Crown Street bus stop on Victoria Road Gladesville



Last Month or rather in the September newsletter I wrote about Challenges we face at SPASM in looking after the many interesting and beautiful artifacts that have been collected over the years.

This month I would like to tell you our members of an opportunity that we have been offered.

SPASM is one of 50 museums associated with hospitals or universities that have been contacted by The South Australian Medical History Society who have invited SPASM to participate in their project that seeks to celebrate and preserve the history of Medicine in Australia. They are developing a book that will feature items of historical significance from museums and private collections across Australia.

We have been asked to provide a list of 5 or fewer significant items from our collections, which we will need to photograph and describe explaining their importance, as well telling the story of how it was acquired.

At our next meeting on Monday 25th November we will be choosing what items will be submitted, searching the data base for information and assigning objects to be considered for inclusion.

If you would like to be part of this working party, or know anyone who might be interested in joining us, to help promote the SPASM museum in this way please come to the open day to assist us in this important activity.

This project will not be a lengthy one as the SA MHA selection committee is making their decision early next year.

October 24

Attendance at a Health Care Museum such as SPASM allows visitors to reflect on the past, to contrast with the present and contemplate the future.



Possible items for consideration and over page



Visiting the HealthCare Museum in real time or online.

Opening hours for the Museum are 11 am – 3pm on the 2nd Saturday and 4th Monday of each month - February to November. Prior arrangements for small Group visits may also be arranged on other days – depending on volunteer availability.

Executive Members :

President: Sandra Solarz.

Co Curators : Gary Klopfer & Peter Hartigan.

Secretary /Treasurer: Ros Berryman

Volunteer Guides: Val Corcoran, Kate Sauer, Kerry Moroney, John Murphy & Peter Hartigan

Fire Warden: Kerry Maroney.

Email : info@spasmmuseum.org.au

Contact SPASM by phone 0414993138

SPASM web sites at www.spasmmuseum.org.au

Like us on Facebook:

<https://www.facebook.com/SPASM1>

We also feature on the Hunters hill web page:

<https://www.facebook.com/discoverhh>

And the Museum and galleries of NSW website:

Entry to the Museum takes you to another era:

Building 1

The Corridor gives a time line of the Tarban Creek Asylum - Gladesville Hospital.

1. The Ross Holland Anaesthetic Room. Showcases the changes in anaesthetic apparatus used by surgeons, dentists and anaesthetists over the years. Look for: the ventilator, which has bicycle gears as part of its internal mechanism

2. The Anne Jaumees Operating Theatre circa 2000 has a "new" op table, mayo stand, anaesthetic machine and endoscopic tower. All items were donated by Canterbury Hospital.

3. The Pharmacy room shows beautiful jars, and bottles, household remedies and also some early dispensing records, There is also an optical collection and some straight jackets to view.

4. The small room outback has the large EEG machine and ECT machines on display along with additional anaesthetic instruments and equipment.

Building 6

Room 1 takes us to a 1911 Consulting room: **"The consulting room of Dr. John Sand Smyth"** who practiced in Warwick Queensland. Also The Five Dock GP **"Dr. Menzies collection"** is in the large display case at back. The 1936-2006 instruments of GP **Dr. Leslie Bruce Johnson** are also now in this room.

Room 2. The surgical "pick room" contains instrument cupboards with a display of surgical instruments, sutures and blood collecting apparatus.

Room 3 The St Thomas Hospital Operating Theatre has a display of receptacles used in the operating theatres as well as an early operating table, early surgical instruments as well as ENT, obstetric, and general instruments. A timeline is provided for innovations. The early challenges of pain, sepsis & blood loss are explained.

Room 4 The haemostasis room an impressive display of diathermy units as well as other methods used to prevent bleeding during operations. Tourniquets, clamps, suturing material, bone wax, and more. Then there is the 1930's operating table, a swab rack, a large print photo of RNSH Thoracic Theatre Nurses C1954. Plus our 2024 acquisition the Sigmamotor heart lung pump machine.

The corridor to the exit takes you past a display of hearing trumpets, tracheostomy tubes and other historical equipment. There are small formaldehyde sterilising cupboards, sterilizing drums, as well as small water bath sterilizers used at the South pole! The dental section shows 4 types of dental drills, including a **very old treadle drill**, used between 1890s and 1930's. Our 2023 exhibit the C1920's Ritter-Biber X-ray machine takes pride of place at the end of the Corridor.

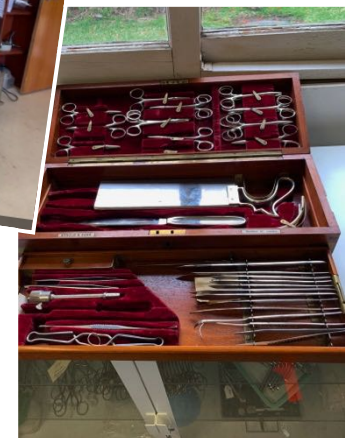
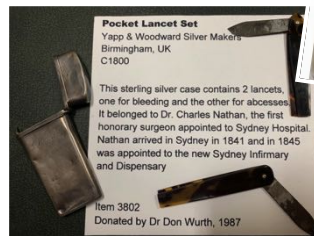
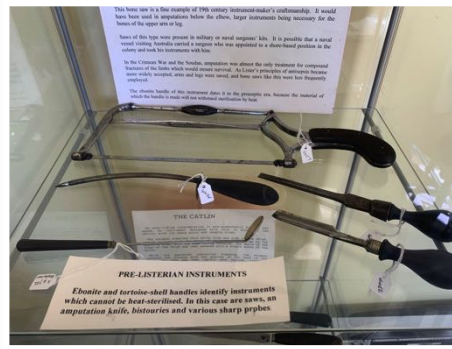
The library work area is now a pleasant place to sit & relax take tea and work on cataloging the many artifacts we have that have not been entered into the computer.

The World War I & II area is now complete with its large photograph of Casualty Clearing Station Operating Theatre in France and instrument sets used during both wars.

Building 5

The Tea Room for group tea or coffee

The Gladesville room The staff bundy clock, and religious artifacts used at Gladesville during services: a very old bible; church organ & pew. There are photographs and some stories about past patients and attendants, as well as literature about the past history of the asylum.



Corporate Member of SPASM
NSW O.T.A.

NSW Health Care Museum
SPASM